



Certificate of Analysis  
Compliance Test

Client Information:

Extract Labs

1399 Horizon Ave.  
Lafayette, CO 80026

Batch # 24T1061501  
Batch Date: 2024-01-31  
Extracted From: Hemp

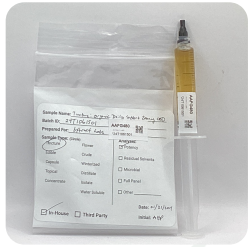
Test Reg State: Colorado

Order # EXT240131-020001  
Order Date: 2024-01-31  
Sample # AAFG480

Sampling Date: 2024-02-03  
Lab Batch Date: 2024-02-03  
Completion Date: 2024-02-07

Initial Gross Weight: 10.838 g

Number of Units: 1  
Net Weight per Unit: 30000.000 mg



Product Image



Potency  
Tested



Potency 10

Specimen Weight: 100.960 mg

Tested

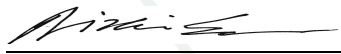
SOP13.001 (LCUV)

Analyte	Dilution (1:n)	LOD (%)	LOQ (%)	Result (mg/g)	(%)
CBD	10.000	5.40E-5	0.015	71.540	7.154
CBC	10.000	1.80E-5	0.015	1.560	0.156
Delta-9 THC	10.000	1.30E-5	0.015	1.130	0.113
CBG	10.000	2.48E-4	0.015	0.720	0.072
CBDV	10.000	6.50E-5	0.015	0.350	0.035
CBN	10.000	1.40E-5	0.015	0.230	0.023
CBDA	10.000	1.00E-5	0.015	<LOQ	<LOQ
CBGA	10.000	8.00E-5	0.015	<LOQ	<LOQ
THCA-A	10.000	3.20E-5	0.015	<LOQ	<LOQ
THCV	10.000	7.00E-6	0.015	<LOQ	<LOQ
Total Active CBD	10.000			71.540	7.154
Total Active THC	10.000			1.130	0.113



Potency Summary

Total Active THC 0.113% 33.900 mg	Total Active CBD 7.154% 2,146.200 mg
Total CBG 0.072% 21.600 mg	Total CBN 0.023% 6.900 mg
Other Cannabinoids 0.191% 57.3 mg	Total Cannabinoids 7.553% 2,265.900 mg

  
Aixa Sun Lab Director/Principal Scientist  
D.H.Sc., M.Sc., B.Sc., MT (AAB)



Definitions and Abbreviations used in this report: Total Active CBD = CBD + (CBD-A \* 0.877), \*Total CBDV = CBDV + (CBDVA \* 0.87), Total Active THC = THCA-A \* 0.877 + Delta 9 THC, Total THCV = THCV + (THCVA \* 0.87), CBG Total = (CBGA \* 0.877) + CBG, CBN Total = (CBNA \* 0.877) + CBN, Total CBC = CBC + (CBCA \* 0.877), Total THC-O-Acetate = Delta 8 THC-O-Acetate + Delta 9 THC-O-Acetate, Total THCP = Delta8-THCP + Delta9-THCP, Other Cannabinoids Total = Total Cannabinoids - All the listed cannabinoids on the summary section, Total Detected Cannabinoids = Delta6a10a-THC + Delta8-THC + Total CBN + CBT + CBE + Delta8-THCV + Total CBG + Total CBD + Total THCV + CBL + Total THC + Total CBC + Total CBDV + Delta10-THC + Total THC-O-Acetate + Total THCP. (mg/ml) = Milligrams per Milliliter, LOQ = Limit of Quantitation, LOD = Limit of Detection, Dilution = Dilution Factor, (ppb) = Parts per Billion, (%) = Percent, (cfu/g) = Colony Forming Unit per Gram, (µg/g) = Microgram per Gram, (ppm) = Parts per Million, (ppm) = (µg/g), (aw) = Water Activity, (mg/Kg) = Milligram per Kilogram. ACS uses simple acceptance criteria. Passed - Analyte/microbe is not detected or is at the level below the action limit per CO rule 6 CCR 1010-21. Failed - Analyte/microbe is at the level that equal or above the action limit per CO rule 6 CCR 1010-21 Sample not received via laboratory sampling.

This report shall not be reproduced, without written approval, from ACS Laboratory. The results of this report relate only to the material or product analyzed. Test results are confidential unless explicitly waived otherwise. ACS Laboratory is accredited to the ISO/IEC 17025:2017 Standard.