



## Certificate of Analysis

Compliance Test

### Client Information:

#### Extract Labs

1399 Horizon Ave.  
Lafayette, CO 80026

Batch # 23CT2030903  
Batch Date: 2023-03-09  
Extracted From: Hemp

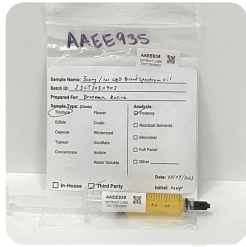
Test Reg State: Colorado

Order # EXT230309-010001  
Order Date: 2023-03-09  
Sample # AAEE935

Sampling Date: 2023-03-13  
Lab Batch Date: 2023-03-13  
Completion Date: 2023-03-15

Initial Gross Weight: 9.254 g  
Volume: 1 ml

Number of Units: 1  
Net Weight per Unit: 958.611 mg



Product Image



Potency  
Tested



### Potency 10

Specimen Weight: 118.700 mg

### Tested

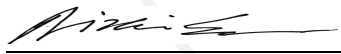
SOP13.001 (LCUV)

Analyte	LOD (%)	LOQ (%)	Result (mg/g)	(%)
CBD	5.40E-5	0.0015	321.540	32.154
CBDV	6.50E-5	0.0015	3.860	0.386
CBC	1.80E-5	0.0015	1.030	0.103
CBN	1.40E-5	0.0015	0.890	0.089
CBG	2.48E-4	0.0015	0.780	0.078
Delta-9 THC	1.30E-5	0.0015	0.310	0.031
THCV	7.00E-6	0.0015	0.220	0.022
CBD-A	1.00E-5	0.0015	<LOQ	<LOQ
CBGA	8.00E-5	0.0015	<LOQ	<LOQ
THCA-A	3.20E-5	0.0015	<LOQ	<LOQ
Total Active CBD			308.230	32.154
Total Active THC			0.300	0.031



### Potency Summary

<b>Total Active THC</b> 0.031% 0.300mg	<b>Total Active CBD</b> 32.154% 308.230mg
<b>Total CBG</b> 0.078% 0.750mg	<b>Total CBN</b> 0.089% 0.850mg
<b>Other Cannabinoids</b> 0.511% 4.900mg	<b>Total Cannabinoids</b> 32.863% 315.030mg

  
Aixa Sun Lab Director/Principal Scientist  
D.H.Sc., M.Sc., B.Sc., MT (AAB)



Definitions and Abbreviations used in this report: Total Active CBD = CBD + (CBD-A \* 0.877), \*Total CBDV = CBDV + (CBDVA \* 0.87), Total Active THC = THCA-A \* 0.877 + Delta 9 THC, Total THC = THCV + (THCVA \* 0.87), CBG Total = (CBGA \* 0.877) + CBG, CBN Total = (CBNA \* 0.877) + CBN, Total CBC = CBC + (CBCA \* 0.877), Total THC-O-Acetate = Delta 8 THC-O-Acetate + Delta 9 THC-O-Acetate, Total THCP = Delta8-THCP + Delta9-THCP, Other Cannabinoids Total = Total Cannabinoids - All the listed cannabinoids on the summary section, Total Detected Cannabinoids = Delta8-THC + Delta9-THC + Total CBN + CBT + CBE + Delta8-THCV + Total CBG + Total CBD + Total THCV + CBL + Total THC + Total CBC + Total CBDV + Delta10-THC + Total THC-O-Acetate + Total THCP. (mg/ml) = Milligrams per Milliliter, LOQ = Limit of Quantitation, LOD = Limit of Detection, Dilution = Dilution Factor (ppb) = Parts per Billion, (%) = Percent, (cfu/g) = Colony Forming Unit per Gram (cfu/g) = Colony Forming Unit per Gram, , LOD = Limit of Detection, (µg/g) = Microgram per Gram (ppm) = Parts per Million, (ppm) = (µg/g), (aw) = aw (area ratio) = Area Ratio, (mg/Kg) = Milligram per Kilogram, Passed - Analyte/microbe is non-detected or at the level below the action limit, Failed - Analyte/microbe is at the level that equal or above the action limit, \*Measurement of Uncertainty = +/- 10%  
This report shall not be reproduced, without written approval, from ACS Laboratory. The results of this report relate only to the material or product analyzed. Test results are confidential unless explicitly waived otherwise. ACS Laboratory is accredited to the ISO/IEC 17025:2017 Standard.