



## Certificate of Analysis

Compliance Test

### Client Information:

#### Extract Labs

1399 Horizon Ave.  
Lafayette, CO 80026

Batch # 23A4000303  
Batch Date: 2023-03-03  
Extracted From: Hemp

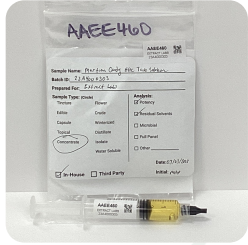
Test Reg State: Colorado

Production Facility: Extract Labs

Order # EXT230306-040001  
Order Date: 2023-03-06  
Sample # AAEE460

Sampling Date: 2023-03-13  
Lab Batch Date: 2023-03-13  
Completion Date: 2023-03-18

Initial Gross Weight: 7.209 g



Product Image

HHCP

Tested



Residual Solvents

Passed

### HHC Summary

Total HHC  
62.2%

HHCP \*\*\*


Specimen Weight: 59.600 mg

Tested

SOP13.050 (LCMS)

Dilution Factor: 5000.000

Analyte	LOD (%)	LOQ (%)	Result (mg/g)	(%)	Analyte	LOD (%)	LOQ (%)	Result (mg/g)	(%)
(9R)-HHC	3.1100E-7	7.5E-5	390.0000	39	9(S)-HHCP	2.5500E-6	7.5E-5	<LOQ	<LOQ
(9S)-HHC	8.7400E-7	7.5E-5	232.0000	23.2	Delta-9 THC	2.8000E-5	7.5E-5	<LOQ	<LOQ
(±)-9β-hydroxy-HHC	4.5800E-7	7.5E-5	<LOQ	<LOQ	Total HHC			622.0000	62.2
9(R)-HHCP	3.0900E-6	7.5E-5	<LOQ	<LOQ					

  
Aixa Sun Lab Director/Principal Scientist  
D.H.Sc., M.Sc., B.Sc., MT (AAB)



Definitions and Abbreviations used in this report: Total Active CBD = CBD + (CBD-A \* 0.877), \*Total CBDV = CBDV + (CBDVA \* 0.87), Total Active THC = THCA-A \* 0.877 + Delta 9 THC, Total THCV = THCV + (THCVA \* 0.87), CBG Total = (CBGA \* 0.877) + CBG, CBN Total = (CBNA \* 0.877) + CBN, Total CBC = CBC + (CBCA \* 0.877), Total THC-O-Acetate = Delta 8 THC-O-Acetate + Delta 9 THC-O-Acetate, Total THCP = Delta8-THCP + Delta9-THCP, Other Cannabinoids Total = Total Cannabinoids - All the listed cannabinoids on the summary section, Total Detected Cannabinoids = Delta6a10a-THC + Delta8-THC + Total CBN + CBT + CBE + Delta8-THCV + Total CBG + Total CBD + Total THCV + CBL + Total THC + Total CBC + Total CBDV + Delta10-THC + Total THC-O-Acetate + Total THCP. (mg/ml) = Milligrams per Milliliter, LOQ = Limit of Quantitation, LOD = Limit of Detection, Dilution = Dilution Factor (ppb) = Parts per Billion, (%) = Percent, (cfu/g) = Colony Forming Unit per Gram (cfu/g) = Colony Forming Unit per Gram, , LOD = Limit of Detection, (µg/g) = Microgram per Gram (ppm) = Parts per Million, (ppm) = (µg/g), (aw) = aw (area ratio) = Area Ratio, (mg/Kg) = Milligram per Kilogram, Passed - Analyte/microbe is non-detected or at the level below the action limit, Failed - Analyte/microbe is at the level that equal or above the action limit

This report shall not be reproduced, without written approval, from ACS Laboratory. The results of this report relate only to the material or product analyzed. Test results are confidential unless explicitly waived otherwise. ACS Laboratory is accredited to the ISO/IEC 17025:2017 Standard. The tests and/or calibrations marked with an "\*\*\*\*" are not ISO/IEC 17025:2017 accredited test results.



## Certificate of Analysis

Compliance Test

### Client Information:

#### Extract Labs

1399 Horizon Ave.  
Lafayette, CO 80026

Batch # 23A4000303  
Batch Date: 2023-03-03  
Extracted From: Hemp

Test Reg State: Colorado

Production Facility: Extract Labs

Order # EXT230306-040001  
Order Date: 2023-03-06  
Sample # AAEE460

Sampling Date: 2023-03-13  
Lab Batch Date: 2023-03-13  
Completion Date: 2023-03-18

Initial Gross Weight: 7.209 g




### Residual Solvents - CO

Specimen Weight: 11.300 mg

**Passed**  
SOP13.039 (GCMS)

Dilution Factor: 1.000

Analyte	LOD (ppm)	LOQ (ppm)	Action Limit (ppm)	Result (ppm)	Analyte	LOD (ppm)	LOQ (ppm)	Action Limit (ppm)	Result (ppm)
Acetone	0.015	2.08	1000	<LOQ	Isopropyl alcohol	0.0048	1.39	1000	56.133
Benzene	0.0002	0.02	2	<LOQ	Methanol	0.0005	0.69	600	<LOQ
Butanes	0.4167	2.5	1000	<LOQ	Pentane	0.037	2.08	1000	<LOQ
Ethanol	0.0021	2.78	1000	<LOQ	Propane	0.031	5.83	1000	<LOQ
Ethyl Acetate	0.0012	1.11	1000	<LOQ	Toluene	0.0009	2.92	180	<LOQ
Heptane	0.0013	1.39	1000	<LOQ	Total Xylenes	0.0001	2.92	430	<LOQ
Hexane	0.068	1.17	60	<LOQ					

  
Aixa Sun Lab Director/Principal Scientist  
D.H.Sc., M.Sc., B.Sc., MT (AAB)



Definitions and Abbreviations used in this report: Total Active CBD = CBD + (CBD-A \* 0.877), \*Total CBDV = CBDV + (CBDVA \* 0.87), Total Active THC = THCA-A \* 0.877 + Delta 9 THC, Total THC = THCV + (THCVA \* 0.87), CBG Total = (CBGA \* 0.877) + CBG, CBN Total = (CBNA \* 0.877) + CBN, Total CBC = CBC + (CBCA \* 0.877), Total THC-O-Acetate = Delta 8 THC-O-Acetate + Delta 9 THC-O-Acetate, Total THCP = Delta8-THCP + Delta9-THCP, Other Cannabinoids Total = Total Cannabinoids - All the listed cannabinoids on the summary section, Total Detected Cannabinoids = Delta6a10a-THC + Delta8-THC + Total CBN + CBT + CBE + Delta8-THCV + Total CBG + Total CBD + Total THCV + CBL + Total THC + Total CBC + Total CBDV + Delta10-THC + Total THC-O-Acetate + Total THCP. (mg/ml) = Milligrams per Milliliter, LOQ = Limit of Quantitation, LOD = Limit of Detection, Dilution = Dilution Factor (ppb) = Parts per Billion, (%) = Percent, (cfu/g) = Colony Forming Unit per Gram (cfu/g) = Colony Forming Unit per Gram, , LOD = Limit of Detection, (µg/g) = Microgram per Gram (ppm) = Parts per Million, (ppm) = (µg/g), (aw) = aw (area ratio) = Area Ratio, (mg/Kg) = Milligram per Kilogram, Passed - Analyte/microbe is non-detected or at the level below the action limit, Failed - Analyte/microbe is at the level that equal or above the action limit

This report shall not be reproduced, without written approval, from ACS Laboratory. The results of this report relate only to the material or product analyzed. Test results are confidential unless explicitly waived otherwise. ACS Laboratory is accredited to the ISO/IEC 17025:2017 Standard. The tests and/or calibrations marked with an "\*\*\*\*" are not ISO/IEC 17025:2017 accredited test results.